

# SMITH DAIRY WEST P.U.D.—PLAT No. 3

BEING A REPLAT OF PART OF BLOCK 38 OF PALM BEACH FARMS COMPANY PLAT No. 3, AS RECORDED IN PLAT BOOK 2, PAGES 45 THROUGH 54 OF THE PUBLIC RECORDS OF PALM BEACH COUNTY, FLORIDA IN PART OF SECTIONS 4 AND 5, TOWNSHIP 45 SOUTH, RANGE 42 EAST, PALM BEACH COUNTY, FLORIDA  
 SHEET 5 OF 9 SHEETS  
 MARCH 1996

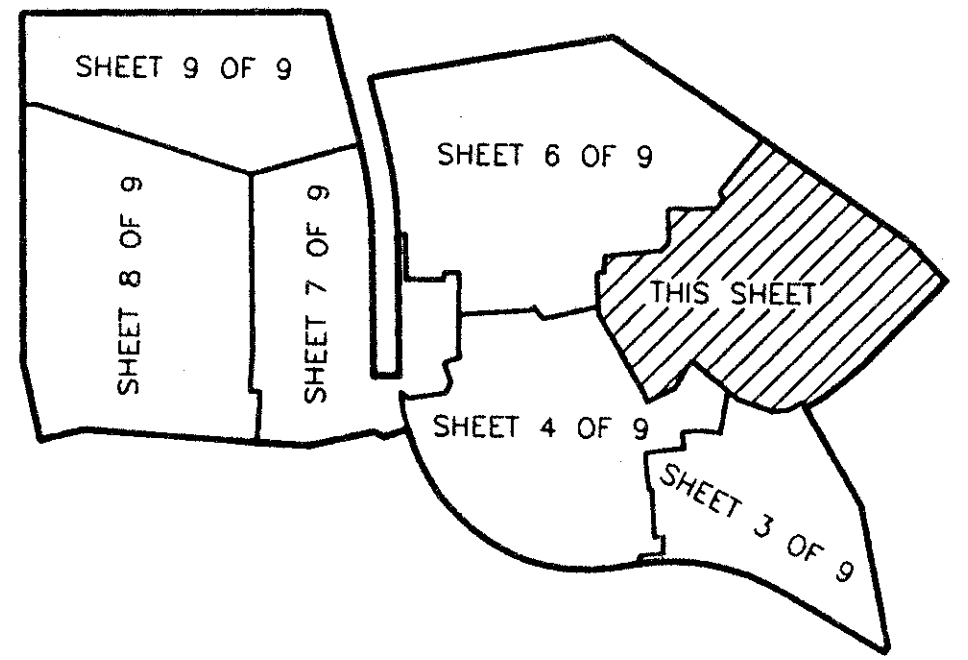
PALM BEACH FARMS Co. PLAT No. 3  
 TRACT 73, BLOCK 38  
 PER PLAT BOOK 2, PAGE 45-54

- LEGEND:
- = PERMANENT REFERENCE MONUMENT "P. L. S. 4828"
  - = PERMANENT CONTROL POINT "P. C. P. 4828"
  - R = RADIUS
  - L = ARC LENGTH
  - Δ = DELTA (CENTRAL ANGLE)
  - PC = POINT OF CURVATURE
  - PT = POINT OF TANGENCY
  - PSM = PROFESSIONAL SURVEYOR & MAPPER
  - PLS = PROFESSIONAL LAND SURVEYOR
  - UE = UTILITY EASEMENT
  - DE = DRAINAGE EASEMENT
  - LME = LAKE MAINTENANCE EASEMENT
  - N = NORTHING (GRID)
  - E = EASTING (GRID)
  - (C) = CALCULATED
  - (R) = RADIAL
  - MREE = MAINTENANCE AND ROOF EAVE EASEMENT

0653-003

# 180

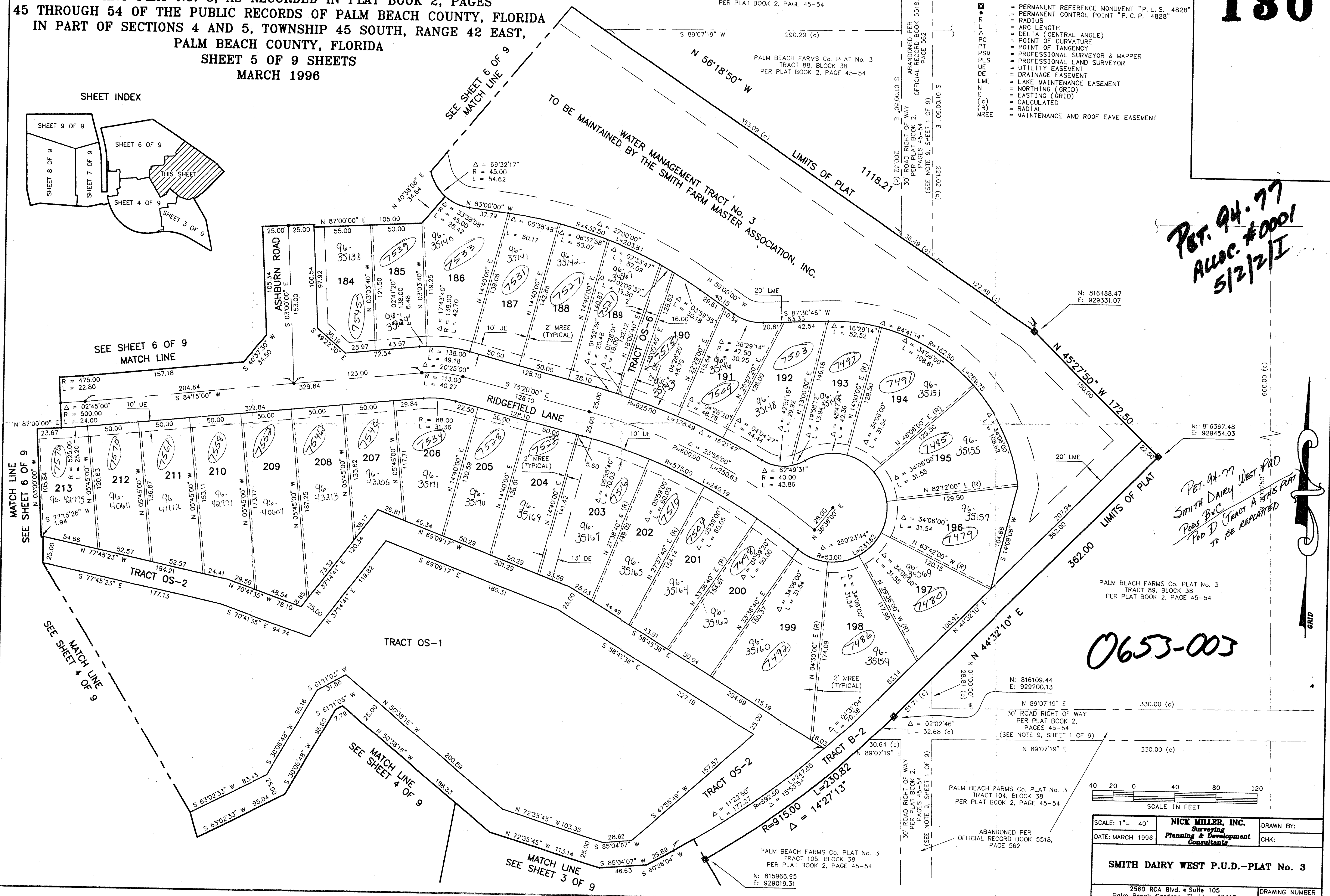
SHEET INDEX



*PET. 94-77  
 ALLOC. #0001  
 5/2/2/I*

*PET. 94-77  
 SMITH DAIRY WEST PUD  
 POD B/C  
 POD D (TRACT A B/C PART  
 TO BE REPLATED)*

0653-003



SUBDIVISION SMITH DAIRY WEST  
 BOOK 77 PAGE 133  
 FLOOD ZONE B FLOOD MAP #1704  
 QUAD # 49 ZONING PUD  
 SE 94-77 ZIP CODE 33467  
 PUD NAME SMITH DAIRY WEST

SCALE IN FEET  
 40 20 0 40 80 120

SCALE: 1" = 40'  
 DATE: MARCH 1996  
 NICK MILLER, INC.  
 Surveying  
 Planning & Development  
 Consultants  
 DRAWN BY:  
 CHK:

SMITH DAIRY WEST P.U.D.—PLAT No. 3

2560 RCA Blvd. • Suite 105  
 Palm Beach Gardens, Florida 33410  
 DRAWING NUMBER  
 940144F